

Inherently flame retardant
print collection



The Lakeland Collection



Inherently flame retardant print collection



Lakeland Collection

Lakeland is a fresh collection of co-ordinating printed furnishing fabrics for the contract market. Inspired by the beauty of the British countryside and the changing seasons, the collection is a mix of contemporary, organic florals and subtle textures, creating a relaxed and stylish ambience for any interior.

Ambleside, the feature floral, is complimented by the delicate leaves and stems of Coniston and Windermere, giving a fashionable botanical feel. Contrast is provided in the form of the smart, textured stripe of Hawkshead and the small-scale geometric, Derwent.

All offered in range of 6 harmonious colourways and an extensive range of base fabrics.



LAKELAND Raspberry



MAIN IMAGE Blind HAWKSHEAD Cornflower **Scatters** AMBLESIDE Cornflower CONISTON Latte WINDERMERE Cornflower DERWENT Cornflower **Chairs** METRO Ivory METRO Mist **Table Runner** MANHATTAN Pearl HAWKSHEAD Cornflower **Napkins** DERWENT Cornflower CONISTON Latte



HEATHER



DUCKEGG



MAIN IMAGE Curtain AMBLESIDE Duckegg Blind HAWKSHEAD Duckegg Scatters DERWENT Apple MANHATTAN Teal CONISTON Apple WINDERMERE Duckegg

MAIN IMAGE Curtains WINDERMERE Heather Sheer MOMENTS Mist Duvet AMBLESIDE Heather HAWKSHEAD Heather (reverse) Bed Runner MANHATTAN Lime Scatters HAWKSHEAD Heather AMBLESIDE Heather MANHATTAN Lime DERWENT Fern Chair METRO Ivory



RASPBERRY



MAIN IMAGE Curtain CONNISTON Mist **Blind** HAWKSHEAD Raspberry **Scatters** WINDERMERE Mist
MANHATTAN Plum CONNISTON Mist/ HAWKSHEAD Raspberry **Throw** MANHATTAN Plum



GOLD

MAIN IMAGE Curtain AMBLESIDE Gold **Blind** DERWENT Pewter **Chair** METRO Onyx **Scatters** CONISTON
Mist HAWKSHEAD Gold



CORNFLOWER



COPPER

MAIN IMAGE Curtain CONNISTON Ochre Blind HAWKSHEAD Copper Scatters AMBLESIDE Copper WINDERMERE Pistachio MANHATTAN Coral DERWENT Copper

MAIN IMAGE Blind HAWKSHEAD Cornflower Scatters AMBLESIDE Cornflower CONISTON Latte WINDERMERE Cornflower DERWENT Cornflower

LAKELAND COLLECTION

TECHNICAL SPECIFICATION

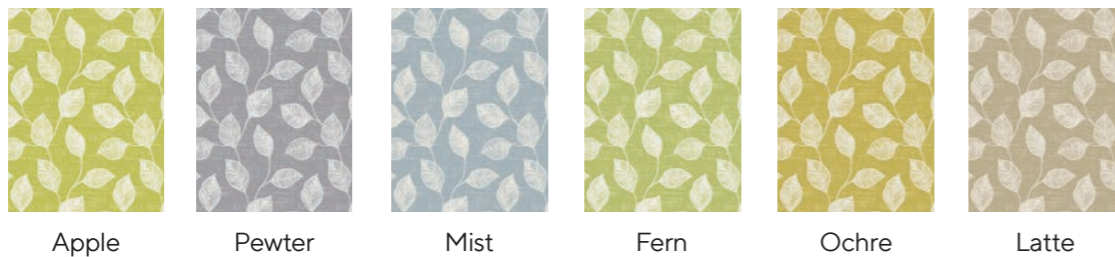
AMBLESIDE

Pattern repeat:
H23.3cm x
V46.6cm
half drop



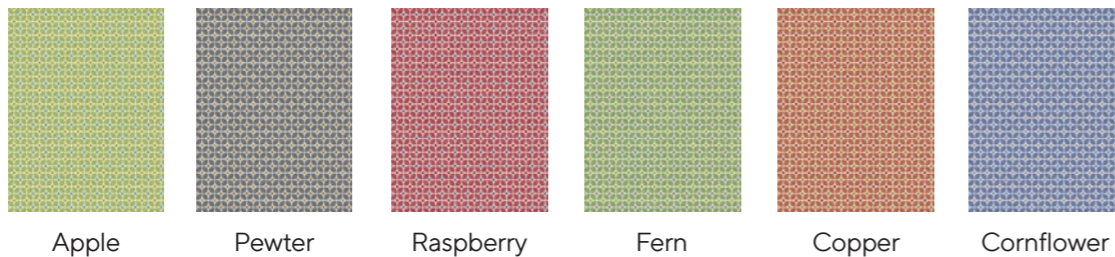
CONISTON

Pattern repeat:
H17.5cm x
V17.5cm



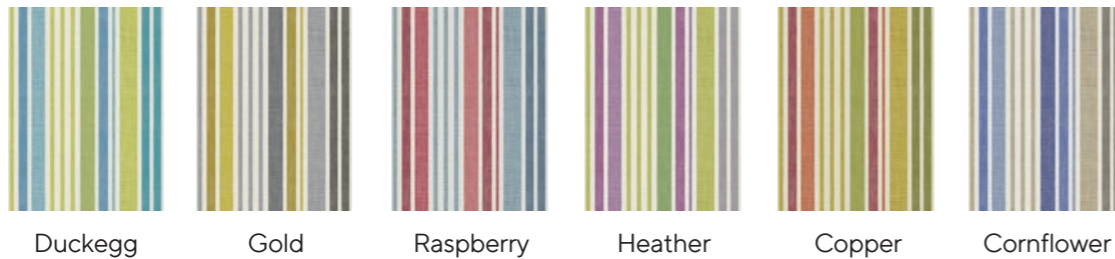
DERWENT

Pattern repeat:
H23.3cm x
V23.5cm



HAWKSHEAD

Pattern repeat:
H35cm x
V35cm



WINDERMERE

Pattern repeat:
H17.5cm x
V35cm
half drop



Product code	Product information	Suggested end use	Flame retardant specification	Care instructions
6910	Inherently Flame Retardant Panama 100% Polyester 150cm / 59 inches 240gsm / 7.1 oz sqy +/- 5%	Curtaining	B1, BS 5867 Part 2 B & C, IMO FTP Code 2010 Part 7	 Washable at 71°C for thermal disinfection
6999	Inherently Flame Retardant Mezzo Brushed Panama 100% Polyester 150cm / 59 inches 220gsm / 6.5 oz sqy +/- 5%	Curtaining	B1, BS 5867 Part 2 B & C, IMO FTP Code 2010 Part 7	 Washable at 71°C for thermal disinfection
6913	Inherently Flame Retardant Satin Weave 100% Polyester 142cm / 56 inches 230gsm / 6.8 oz sqy +/- 5%	Curtaining, Bedding, Cushions	M1, B1, BS 5867 Part 2 B & C, EN 13773, BS 7175 Source 0, 5 & 7, IMO FTP Code 2010 Part 7 & 9	 Washable at 71°C for thermal disinfection
6994	Inherently Flame Retardant Nimbus 100% Trevira CS Polyester 140cm / 55 inches 230gsm / 6.8 oz sqy +/- 5%	Curtaining, Bedding, Cushions	B1, BS 5867 Part 2 B & C, IMO FTP Code 2010 Part 7, BS 5815 Part 3	 Washable at 71°C for thermal disinfection
6934	Inherently Flame Retardant Quatro 100% Polyester 142cm / 56 inches 230gsm / 6.8 oz sqy +/- 5%	Curtaining, Bedding, Cushions	M1, B1, BS 5867 Part 2 B & C, BS 7175 Source 0, 5 & 7, IMO FTP Code 2010 Part 7 & 9	 Washable at 71°C for thermal disinfection
6900	Inherently Flame Retardant Plain Weave 100% Polyester 141cm / 56 inches 145gsm / 4.3 oz sqy +/- 5%	Curtaining, Bedding	M1, BS 5867 Part 2 B & C, BS 5815 Part 3, BS 7175 Source 0, 5 & 7, IMO FTP Code 2010 part 7	 Washable at 71°C for thermal disinfection
6975 & 6974	Inherently Flame Retardant Enigma Dimout 100% Polyester 146-148cm / 57-58 inches (6975) or 292cm / 115 inches (6974) 298gsm / 8.8 oz sqy +/- 5%	Curtaining (Dimout)	M1, B1, EN 13773, BS 5867 Part 2 B & C, IMO FTP Code 2010 part 7, NFPA 701 1+2, Classe Uno	 Washable at 71°C for thermal disinfection
6904	Inherently Flame Retardant Venus Dimout 100% Polyester 150cm / 59 inches 250gsm / 7.4 oz sqy +/- 5%	Curtaining (Dimout)	M1, B1, BS 5867 Part 2 B & C, BS 7175 Source 7, NFPA 701 1+2, CA19, IMO FTP Code 2010 Part 7, Classe Uno	 Washable at 71°C for thermal disinfection
6755 & 6750	Flame Retardant Discovery Blackout 100% Polyester / Acrylic back coating 145cm / 57 inches (6755) or 290cm / 114 inches (6750) 410gsm / 12.1 oz sqy +/- 5%	Curtaining (Blackout)	B1, BS 5867 Part 2 B, EN 13773, IMO Module B, IMO FTP Code 2010 Part 7, NFPA 701 1+2, CA19, Classe Uno	 Iron on non-coated side
6911 & 6952	Inherently Flame Retardant Blackout 100% Polyester / Acrylic back coating 142cm / 56 inches (6911) or 280cm / 110 inches (6952) 240gsm / 7.1 oz sqy +/- 10%	Curtaining (Blackout)	BS 5867 Part 2 B, IMO FTP Code 2010 Part 7, NFPA 701 1+2, Classe Uno	 Iron on non-coated side
6957 & 6958	Flame Retardant Outblack Silk Blackout 100% Polyester / Acrylic back coating 142cm / 56 inches (6957) or 284cm / 112 inches (6958) 285gsm / 8.4 oz sqy +/- 5%	Curtaining (Blackout)	B1, BS 5867 Part 2 B, IMO FTP Code 2010 Part 7, EN 13773, NFPA 701 1+2	 Iron on non-coated side
6896	Inherently Flame Retardant Blackout 100% Polyester / Acrylic back coating 140cm / 55 inches 300gsm / 8.8 oz sqy +/- 5%	Curtaining (Blackout)	M1, B1, BS 5867 Part 2 B, IMO FTP Code 2010 Part 7	 Iron on non-coated side
6996 & 6998	Inherently Flame Retardant Libra Blackout 100% Polyester / Acrylic back coating 145cm / 57 inches (6996) or 280cm / 110 inches (6998) 360gsm / 10.6 oz sqy +/- 5%	Curtaining (Blackout)	BS 5867 Part 2 Type B, IMO FTP Code 2010 Part 7	 Iron on non-coated side
9017	Inherently Flame Retardant Illusion Sheer 100% Polyester 300cm / 118 inches 70gsm / 2.1 oz sqy	Curtaining (Sheer)	M1, EN 13773, BS 5867 Part 2 C, IMO FTP Code 2010 Part 7, Classe Uno	 Do not dry clean
9049 & 9000	Flame Retardant Sheer 100% Polyester 150cm / 59 inches (9049) or 300cm / 118 inches (9000) 50gsm / 1.5 oz sqy +/- 3%	Curtaining (Sheer)	M1, BS 5867 Part 2 C, IMO FTP Code 2010 Part 7	 Do not dry clean
6978	Flame Retardant Sentinel MRSA 100% Polyester / Acrylic back coating 137cm / 54 inches 350gsm / 10.3 oz sqy +/- 5%	Waterproof Upholstery >100,000 Martindale	BS 5852 Crib 5, IMO FTP Code 2010 Part 8	Routine soap and warm water sponging is effective for ordinary soiling. Fresh stains, both water and oil based are easily removed using most water based household cleaning agents. Antiseptic cleaning agents can be used and more stubborn stains may be required a safe solvent such as Isopropyl Alcohol or mineral spirit. A half cup of household bleach for 5 litres of water can also be used as a useful disinfectant. Best cleaning is wipe & dry technique. Full immersion is not recommended. Not dry cleanable. Excellent stain removal has been observed for: Blood, Urine, Grease, Ink, Coffee, Grape Juice, Loline, Betadine, Ketchup, Mustard, Salad dressing and suntan lotion. Do not dry clean Will not support microbial growth including: Aspergillus Niger, E Coli, Altinata, Salmonella, Penicillium, MRSA, Cladosporium Herbarism. AATCC test 147 - 1998
6914	Flame Retardant Enduracare MRSA 100% Polyester impregnated and multi-coated microporous polymers 140cm / 55 inches 350gsm / 10.3 oz sqy +/- 5%	Waterproof Upholstery >50,000 Martindale	BS 5852 Crib 5, IMO FTP Code 2010 Part 8	Routine soap and warm water sponging is effective for ordinary soiling. Fresh stains, both water and oil based are easily removed using most water based household cleaning agents. Antiseptic cleaning agents can be used and more stubborn stains may be required a safe solvent such as Isopropyl Alcohol or mineral spirit. A half cup of household bleach for 5 litres of water can also be used as a useful disinfectant. Best cleaning is wipe & dry technique. Full immersion is not recommended. Not dry cleanable. Excellent stain removal has been observed for: Blood, Urine, Grease, Ink, Coffee, Grape Juice, Loline, Betadine, Ketchup, Mustard, Salad dressing and suntan lotion. Do not dry clean Will not support microbial growth including: Aspergillus Niger, E Coli, Altinata, Salmonella, Penicillium, MRSA, Cladosporium Herbarism. AATCC test 147 - 1998

For use as a guide only. Whilst the colours in this brochure have been reproduced as accurately as possible, we are restricted by the limitations of 4 colour litho printing and there may be slight differences when printed on fabric.

Soapless detergent to be used on all of the above base cloths. No fabric conditioners/softeners or freshener sprays to be used as this can adversely affect FR properties. A tolerance of +/- 3% should be allowed for on pattern repeats as it can vary from quality to quality. Shade variations may occur batch to batch but we will endeavour to maintain good colour continuity. Please inspect all goods before cutting as no claims can be accepted or exchanges made once the material has been cut.

